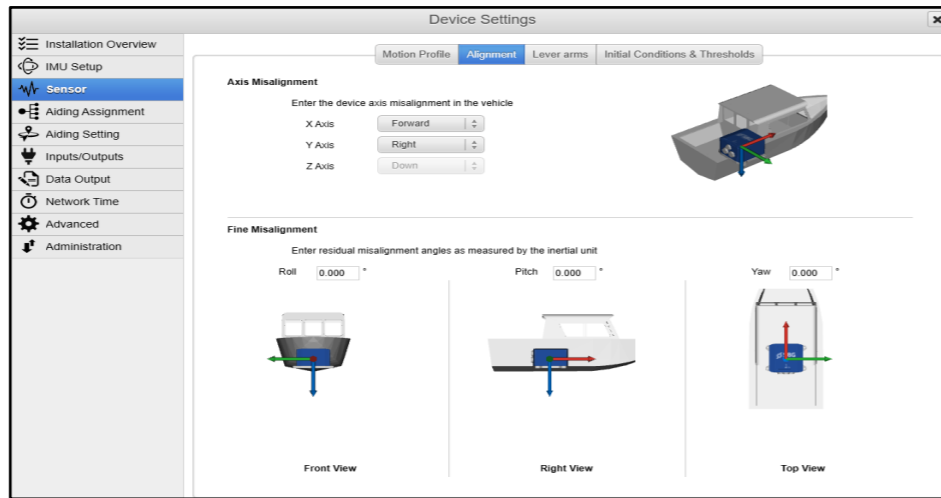


INS Configuration

Open device configuration window by clicking « **Configure** » on top right side of the main SBG systems window

Sensor > Alignment :

- Set the orientation of the INS as it is physically installed in your system.
- You can also add roll, pitch, and yaw offset to correct errors.

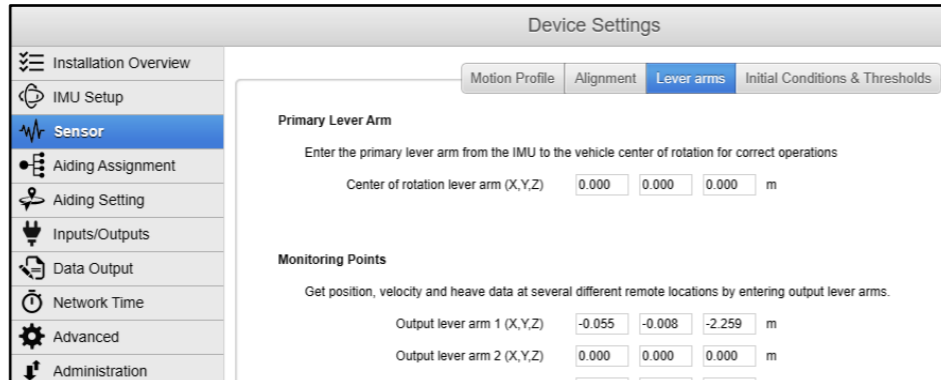


Sensor > Lever arms :

- Set the lever-arms to target reference point (e.g. top pf Sonar head). INS solution will be computed for that point.

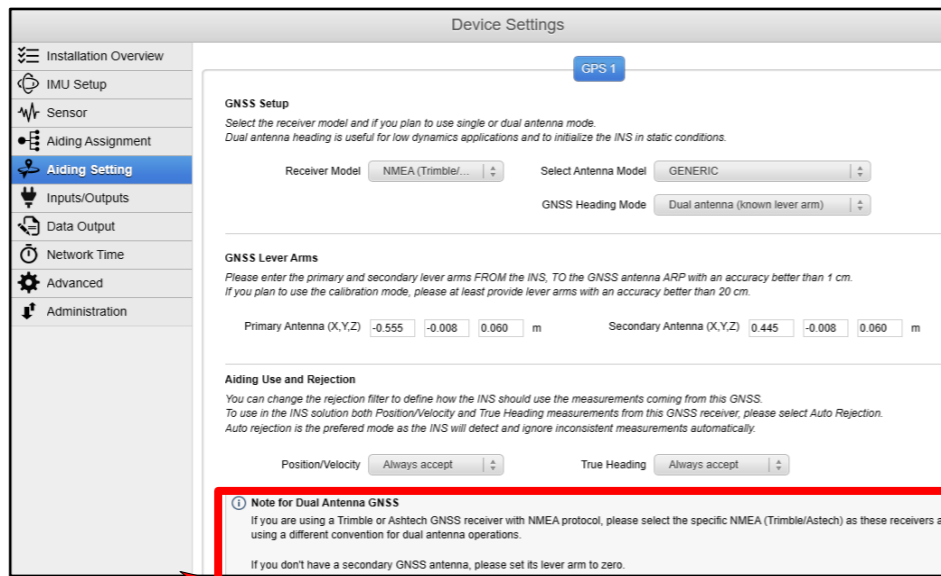


Accuracy of this value has to be within 5 cm.



Aiding Setting > GPS 1 :

- Select your GNSS receiver and antenna model if in menu.
- Set GNSS Lever Arms (X,Y,Z) corresponding to position of antennas based on INS origin.
- In case of Trimble Dual antenna receiver, heading convention is different. It's offset by 180° so heading value in Trimble web interface won't be same as reported in INS web interface.



If you are using Trimble GNSS, pay attention to this note.

VERSION	DATE	MODIFICATION	WRITER	CHECK
2.00	17/07/2023	NTP settings added	MSE	JSS
1.00	23/03/2023	Initial Document	MSE	JSS

INS Information

Description	IP
Default IP set by ITER Systems	192.168.2.34
Product type	SBG Navsight

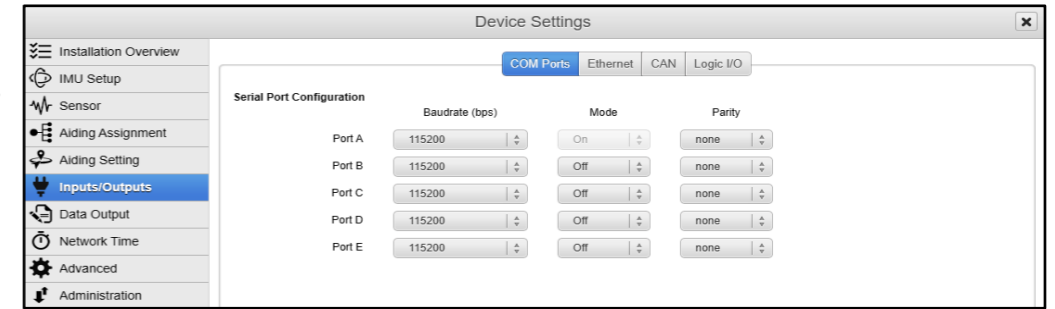
More detailed about INS configuration:
<https://support.sbg-systems.com/sc/kb/latest>

Inputs/Outputs > COM Ports :

- Set input com port for GNSS aiding data.



Put same baudrate as the one set for GNSS

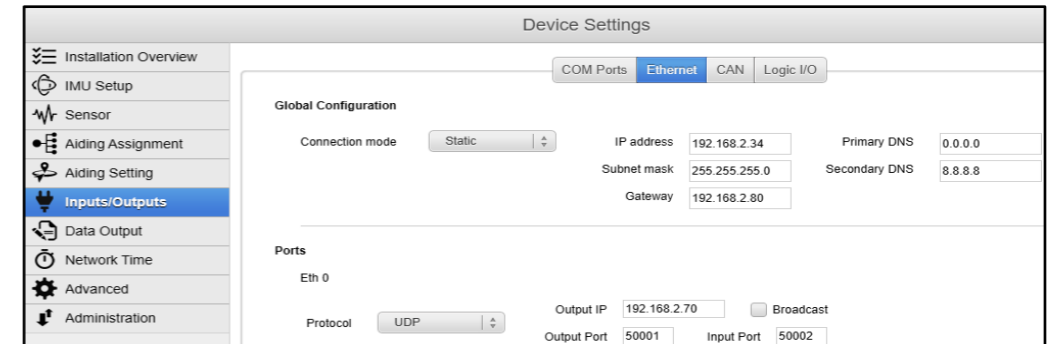


Inputs/Outputs > Ethernet :

- Setting output data ports
- Eth0 interface
- Protocol = UDP
- Port = 50001
- Output IP = PC IP (e.g. 192.168.2.70) or Broadcast

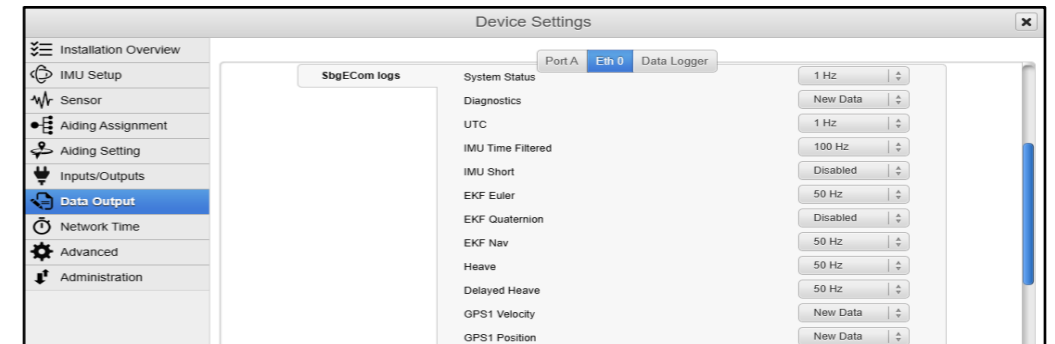


Using Unicast can reduce unnecessary traffic in network



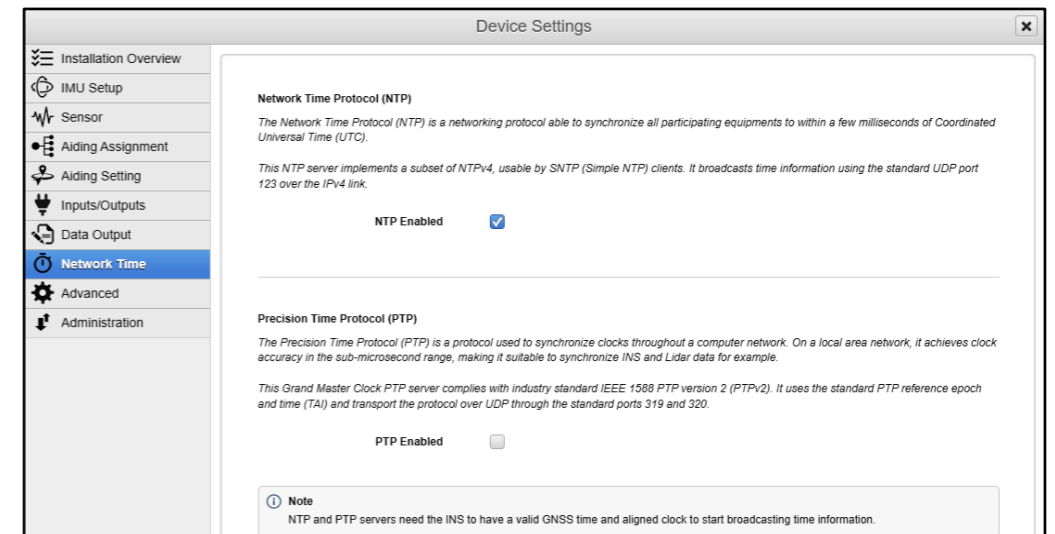
Data Output > Eth 0 :

- Set data output messages for Eth0 interface as per the picture.



Network Time:

- Check the « NTP Enabled » box



ITER Systems
 3 rue du lac du Mont-Cenis,
 73290 La Motte-Servolex, France



DESCRIPTION
 SBG Systems Navsight Ekinox quick configuration

PROJECT:
 4003_Bathyswath-3

All dimensions in mm – Frame size: 400x280
www.iter-systems.com - info@iter-systems.com

DRAWING No.
 ETD-2043

CLASSIFICATION
 Unclassified

PAGE NUMBER
 1 OF 1