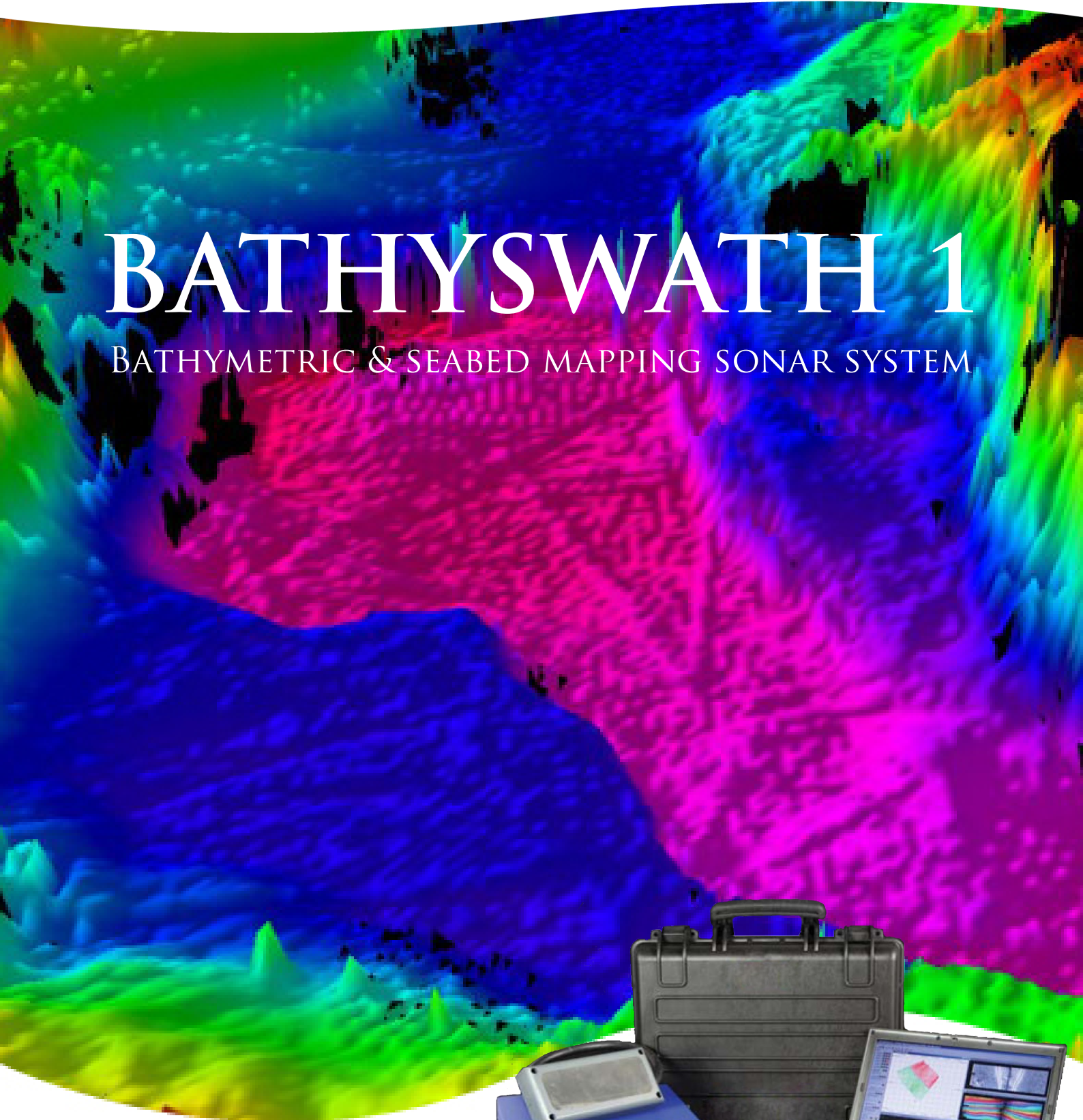




SHALLOW SURVEY EFFICIENCY & QUALITY
FOR COMMERCIAL, SCIENTIFIC & MILITARY NEEDS

BATHYSWATH 1

BATHYMETRIC & SEABED MAPPING SONAR SYSTEM



bathyswath.com
sales@bathyswath.com
support@bathyswath.com

HIGH-DENSITY BATHYMETRY & SIDESCAN SEAFLOOR IMAGERY DATA ACROSS A VERY WIDE SWATH WIDTH



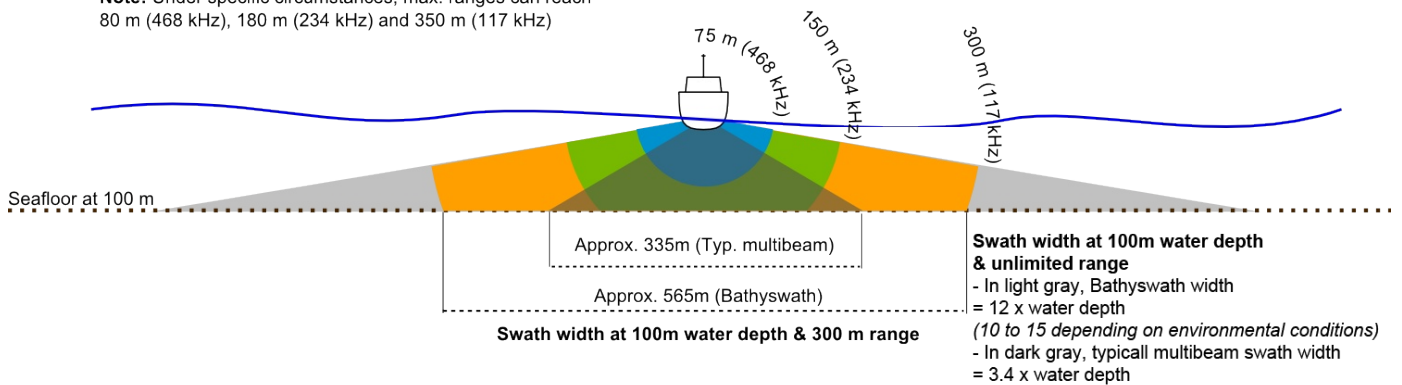
BATHYSWATH is derived from the established & respected SWATHplus system, now re-named as BATHYSWATH 1. ITER Systems continues to support & sell BATHYSWATH 1 systems.

PRODUCTIVITY

BATHYSWATH uses wide swath widths, this increases survey speeds significantly, especially in shallow water. It has 3 frequencies: 117, 234 or 468 kHz to be used respectively up to 350, 200 & 80m of water depth.

The US Geological Survey (USGS) said: "Operating swath of the bathymetric system ranged from 15 to 20 times water depth in in depths less than 15m".

Note: Under specific circumstances, max. ranges can reach 80 m (468 kHz), 180 m (234 kHz) and 350 m (117 kHz)



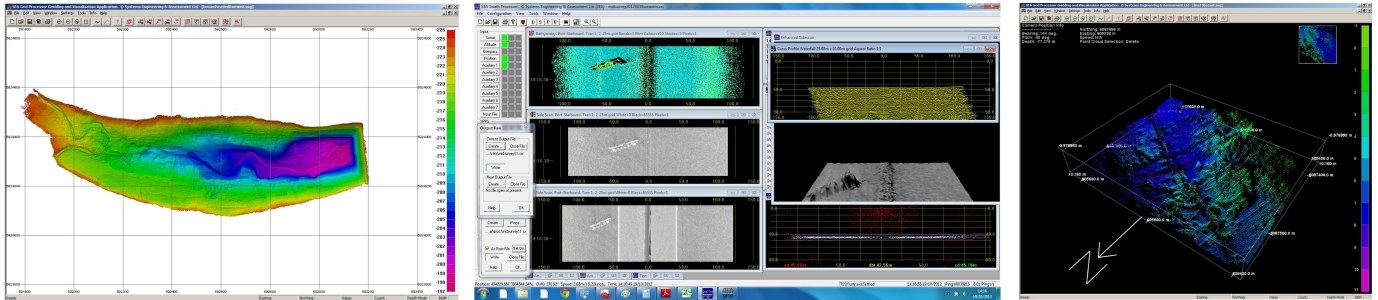
PRODUCT COMPARISON

	BATHYSWATH 1 Standard	BATHYSWATH 1 OEM
Transducers	1 to 3	1 to 3
Transducer extension cables	1 to 3	1 to 3 (option)
Electronics unit		
•Bathyswath electronics	Yes	Yes
•Standard Housing	Yes	No
•Splashproof Housing	Option	No
SWATH software; data acquisition, processing & 3D visualisation; unlimited licenses	Yes	Yes
Transducer mounting bracket	Yes	No
Rugged transit cases	Yes	No
12 month return-to-base warranty	Yes	Yes

**YOU WILL NOT FIND BETTER PRICE FOR THE SAME QUALITY
(IHO STANDARDS COMPLIANT, BATHYMETRY & SIDESCAN)**

SOFTWARE

BATHYSWATH data acquisition & processing software is included in system price but you can also interface to 3rd party software systems such as QINSy, SonarWiz, CARIS, Hypack, Fledermaus, Starfix & PDS2000.



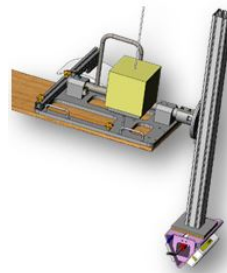
MOUNTS & SPLASHPROOF HOUSING (OPTIONAL)

2 types of mounts are proposed: A Universal Mounting Kit to allow deployment on vessel of opportunity and a Side Mounting Kit for installation on RIBs. Note: BATHYSWATH system is supplied with a V-bracket for 2 or 3 transducers.

Splashproof Housing is an option for BATHYSWATH Standard.



Transducer Mounting Kit



Side Mounting Kit (for RIBs)



Splashproof Housing

APPLICATIONS

- Shallow water hydrographic survey
- Navigational charting
- Environmental monitoring
- Dredging operations
- River, harbour, lake & dam management
- Marine archaeology
- Wreck location
- Marine civil engineering inspection
- Pipeline & cable routeing survey & inspection
- Hull inspection
- Harbour security
- Military rapid environmental assessment

SHALLOW SURVEY QUALITY, VALUE, & EFFICIENCY FOR COMMERCIAL, SCIENTIFIC & MILITARY NEEDS

TECHNICAL SPECIFICATIONS

	117 kHz	234 kHz	468 kHz
Operational slant range (m)	300	150	75
Maximum slant range (m)	350	200	80
Minimum depth (m)	0.3	0.2	0.1
Measurement resolution limit (mm)	12	6	3
Resolution detection limit (mm)	6	3	1.5
Across track resolution (cm)	5	2	1
Beam width, azimuth (2-way)	0.85°	0.55°	0.55°
Transmit pulse length (µs)	17 to 8500	8.5 to 4300	4.3 to 2100
Transducer dimensions (mm)	235 x 550 x 90	160 x 350 x 60	100 x 215 x 42
Transducer weight in air (kg)	13	6	1
Transducer weight in water (kg)	1.6	0.9	0.1
Max. cable length (m)	20	20	15

BATHYSWATH

BATHYSWATH is a dedicated team comprised of the world's most experienced developers of interferometric sonar. Its products are direct descendants of the world's first commercially-available interferometric swath sonar system, which was later developed into SWATHplus. Until August 2012, ITER was the French distributor of Systems Engineering & Assessment Ltd. (SEA) for SWATHplus products. ITER Systems has now taken over all SWATHplus activity & renamed the system BATHYSWATH.



BATHYSWATH
www.bathyswath.com

sales@bathyswath.com
support@bathyswath.com

ITER Systems
310 impasse de la Tuilerie,
74410 Saint Jorioz, France

www.iter-systems.com
Registration number :
799 207 972 RCS Annecy

YOUR LOCAL BATHYSWATH REPRESENTATIVE