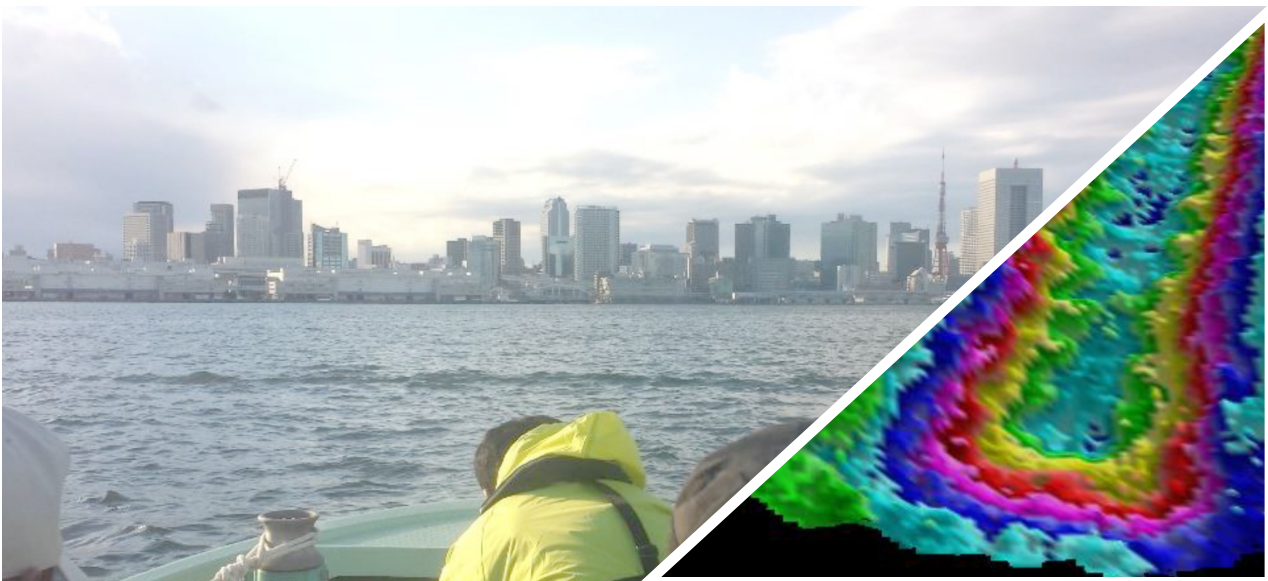




# Survey Note

Tokyo Harbour, Tokyo, Japan, November 2017,  
Bathyswath-2 STD (234kHz), Applanix Surfmaster

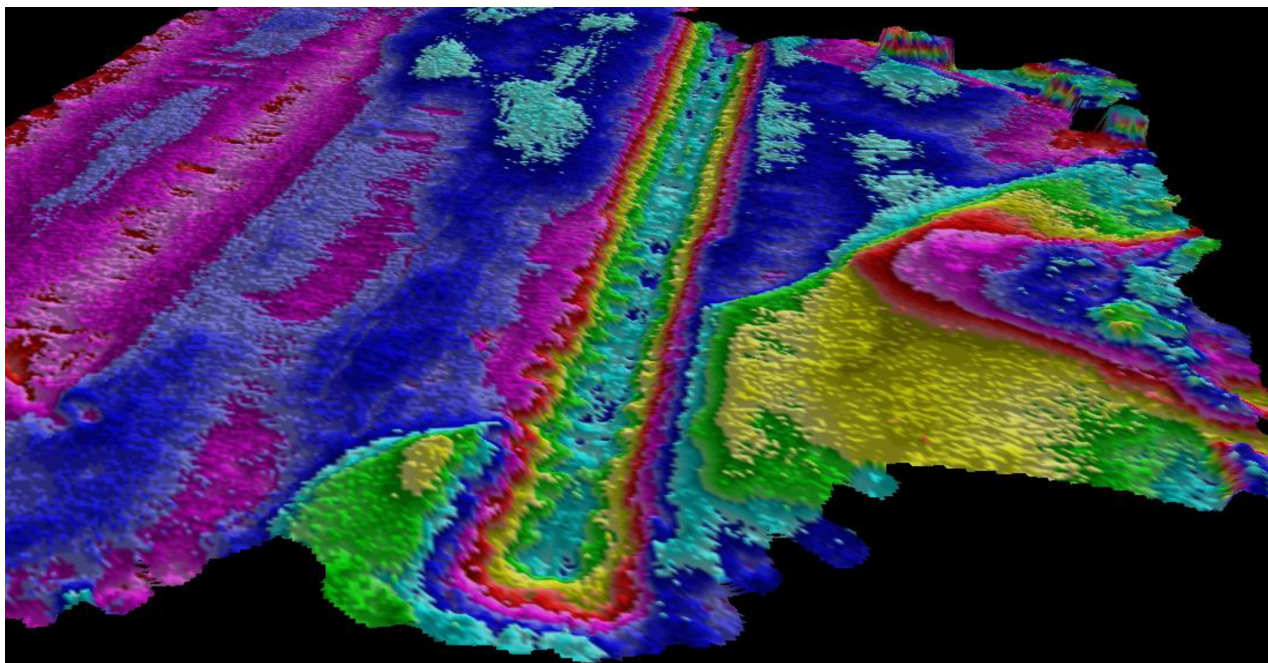


## Survey description

ITER Systems was invited to contribute to a course for international hydrographers, organised by Japan's overseas development agency JICA. The course tutor carried the Bathyswath system in his check-in luggage, within the standard airline weight limit.

As part of that course, the course students ran a short survey in Tokyo harbour from a small open boat with Bathyswath-2 STD 234kHz fitted to an over-the-side pole.

They then returned to the classroom and processed the data using the Bathyswath software. This exercise showed the portability and simplicity of use of Bathyswath.



*3D view of a dredged channel in the bottom*

*The information contained herein is the property of ITER Systems ([info@iter-systems.com](mailto:info@iter-systems.com)) and is supplied without liability for errors or omissions. No part may be reproduced except if a written permission is given by the company. The copyright and the foregoing restriction on reproduction extend to all media in which this information may be embodied.*

310 Impasse de la Tuilerie  
74410 Saint-Jorioz, France  
Phone : + 33 972 457 330  
[info@iter-systems.com](mailto:info@iter-systems.com)  
[www.iter-systems.com](http://www.iter-systems.com)

