

# Survey Note

Hydroelectric Lake, France, EDF, June 2016,  
Bathyswath-2 STD (468kHz)



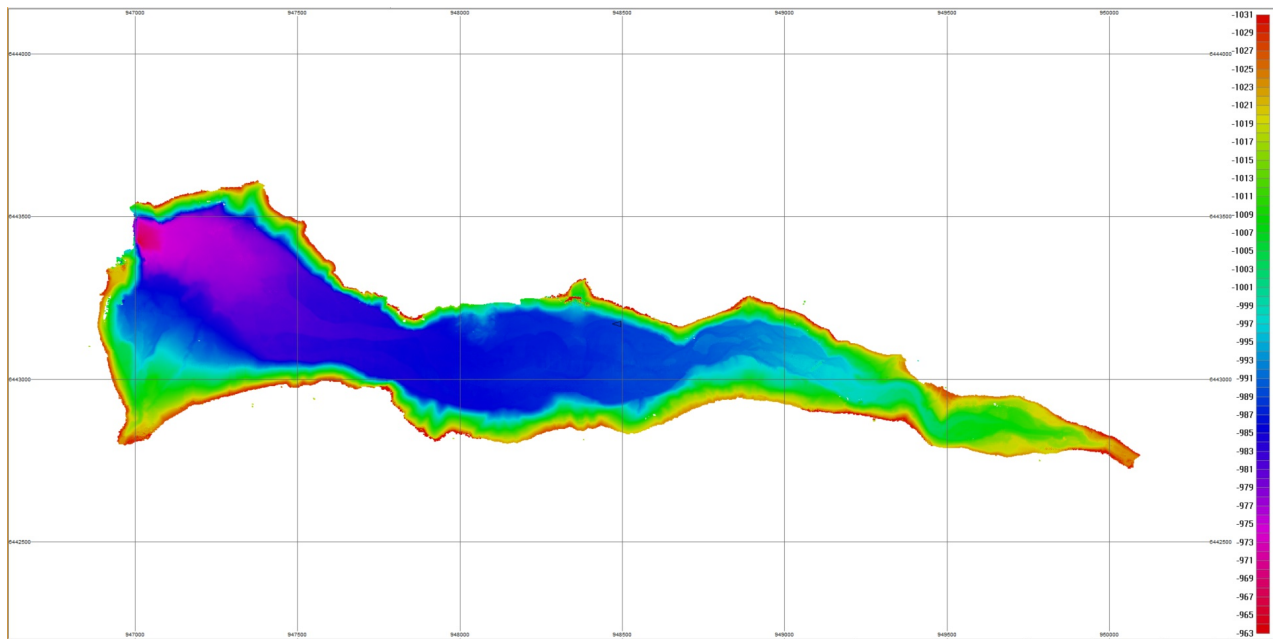
## System used

The sonar used was a Bathyswath-2 STD (468kHz) and the motion sensing and positioning was a SBG Systems Ekinox and Hemisphere Vector VS101.

Bathyswath-PSM (permanent siltation monitoring) system. It wasn't possible to launch a survey boat into the lake, so a RIB fitted with a Bathyswath-2 STD system was delivered to the lake by helicopter.

## Survey description

This survey was done in a hydroelectric lake for the French electricity company, EDF, as reference survey prior to the installation of a



*Colour depth map of the lake, from Bathyswath Grid Processor*

*The information contained herein is the property of ITER Systems ([info@iter-systems.com](mailto:info@iter-systems.com)) and is supplied without liability for errors or omissions. No part may be reproduced except if a written permission is given by the company. The copyright and the foregoing restriction on reproduction extend to all media in which this information may be embodied.*

310 Impasse de la Tuilerie  
74410 Saint-Jorioz, France  
Phone : + 33 972 457 330  
[info@iter-systems.com](mailto:info@iter-systems.com)  
[www.iter-systems.com](http://www.iter-systems.com)

