

Survey Note

Brisbane River, Brisbane, Queensland, Australia, May 2019,
Bathyswath-2 UW (234kHz)



System used

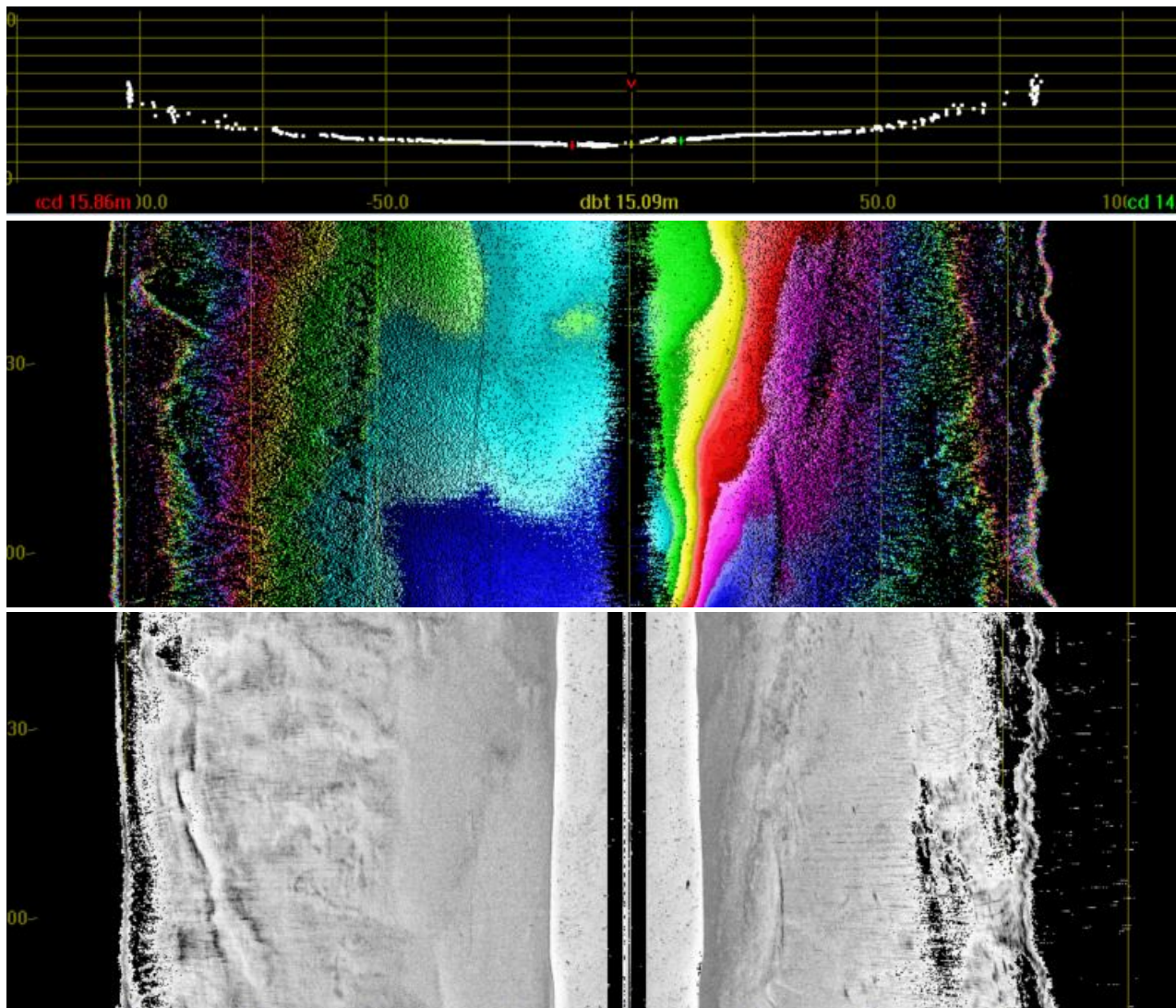
The sonar used was a Bathyswath-2 UW (234kHz) and the motion sensing and positioning was the SBG Systems Ekinox and Heisphere Vector VS101.

Survey description

This was a test with the University of Queensland's Bathyswath-2-UW integrated swath bathymetry system on a survey launch, on the Brisbane River in Brisbane.

Data processing and imaging was performed with Bathyswath software suite.

In places, the complete width of the river, 180m or more, 8 metres deep, could be seen in a single profile. The varied geology of the riverbed showed up well in the sidescan image.



Bank to bank profile

The information contained herein is the property of ITER Systems (info@iter-systems.com) and is supplied without liability for errors or omissions. No part may be reproduced except if a written permission is given by the company. The copyright and the foregoing restriction on reproduction extend to all media in which this information may be embodied.

310 Impasse de la Tuilerie
74410 Saint-Jorioz, France
Phone : + 33 972 457 330
info@iter-systems.com
www.iter-systems.com

